



GA: AMT 1924-001-2-A

Products listed and types are indicative of quality, alternatives may be considered to suit the buyer's application or availability.

**GENERAL**

Application	Construction and Maintenance, Cargo Supply, Dive and ROV Operations, Oil Spill Response, Fish Farm Operations, etc.
Vessel Type	Shallow Draft Multicat Workboat
Designer	Australian Marine Technology Pty Ltd
Builder	MOC Shipyards Pvt Ltd
Classification	BV UMS Coastal
Crew / PAX	4 crew and 8 PAX
Construction	Marine grade aluminium

**DIMENSIONS**

Length Overall	18.75 meters
Beam	8.70 meters
Draft	2.10 meters
Clear Deck Area	95.00 meters square
Deck Load	60 tonnes
Deadweight	72 tonnes

**PERFORMANCE**

Bollard Pull	8 tonnes approx.
Speed Max	10 knots

**MACHINERY**

Main Engines	2 x Caterpillar C12 @ 275 kW each
Propulsion	FPP in Kortz nozzles and 2 x rudders
Generators	1 x 25 kW 415V 50 hz

**TANK CAPACITIES**

Fuel Oil	5,000 litres
Potable Water	600 litres

**AUXILIARY EQUIPMENT**

Sewage Treatment	300 litres STP
Oily Water Separator	1 x 15 ppm (optional)
Fire Hydrants	3 station @ 25 m3 / hr
Fixed Fire System	CO2 (if required)
Bilge System	Mechanical with electric backup

**ACCOMMODATION**

Airconditioned and heated habitable spaces, cabins 1 x 4 person. Galley, mess, and WC and seating for 6 persons. WC and shower

**DECK EQUIPMENT**

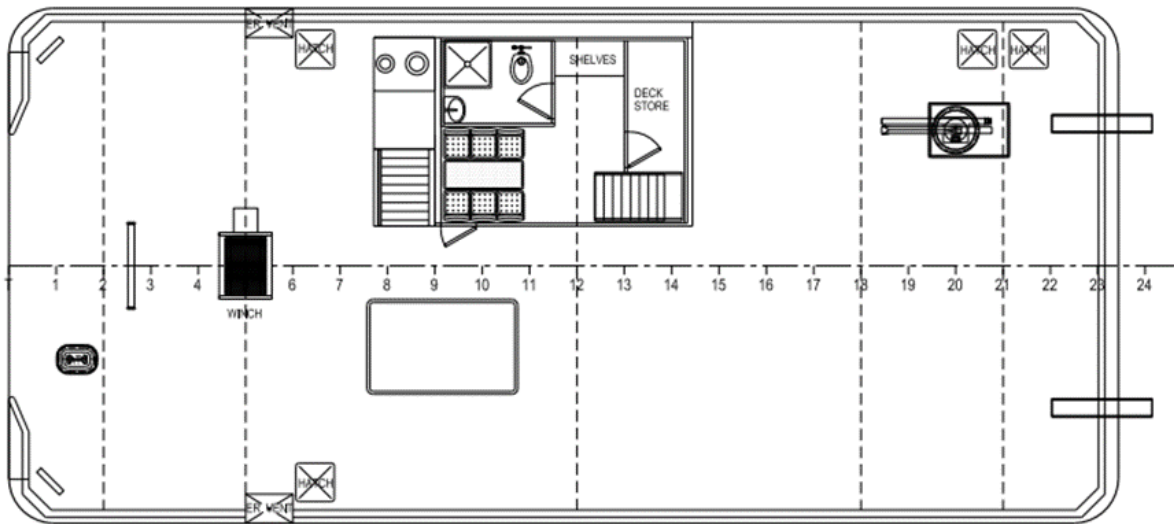
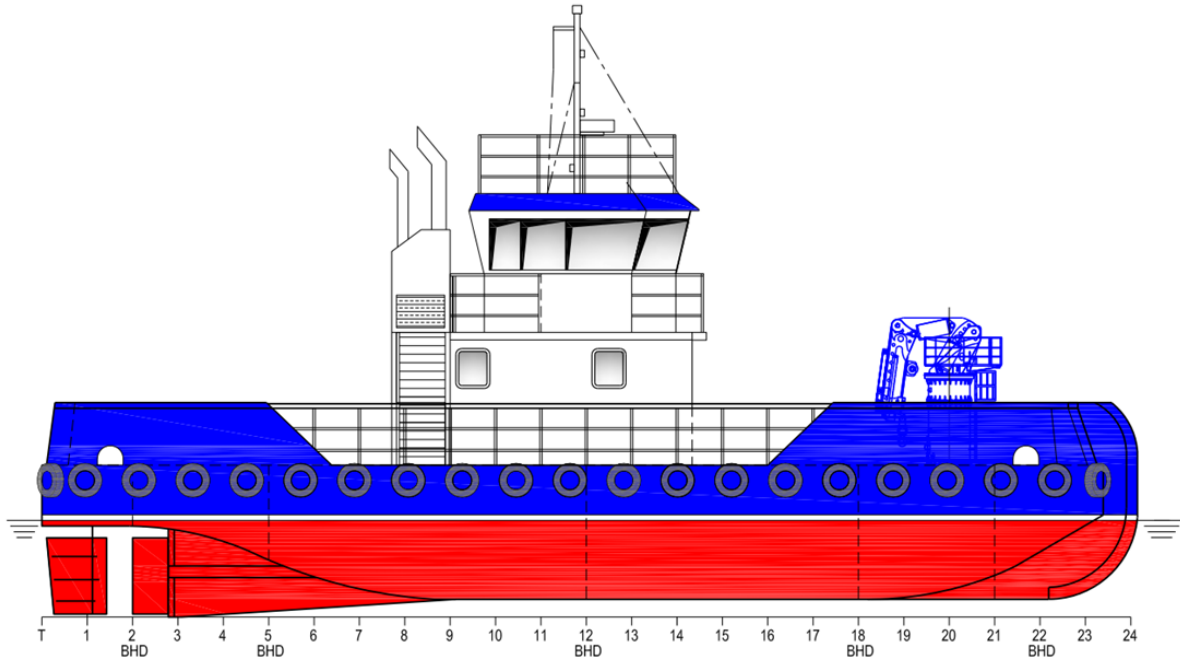
Towing Hook	10 tonne (optional)
Tugger Winch	8 tonne (optional)
Deck Crane	To suit buyers' requirements
Deck Sheaving	Hardwood timber
Stern Roller	Round at transom
Anchor	2 x 70 kg
Anchor Winch	2 x electric

**NAVIGATION**

Searchlight	2 x Francis L300 remote control
Radar System	Simrad NSS16 MDF Halo 20 48 NM
Echo Sounder	Simrad BSM 3 c/w 1 kW TXPR
Nav Plotter	Simrad NSS16
GPS	Simrad GS25
DGPS	Simrad MX610
Auto Pilot	Simrad AP70
SSB / HF Radio	Icom M85E
VHF Radio	Icom M510E
Handheld Radio	2 x Icom M85E
Compass	Simrad Fluxgate FC40
Intercom	2 x Icom M510E c/w wireless remote
Navigation Lights	Class approved
EPIRB	Simrad 406
SART	Simrad SA70

**LIFE SAVING**

Life Rafts	1 x 12 person SOLAS
Personal Flotation	12 x SOLAS and 12 x PFD work vests



MAIN DECK PLAN

